

SML GB6U7 Hang Tag

SML RFID Product Spec Sheet

SML

Offset:

Hang Tag

Inlay:

GB6U7: 30 mm x 15 mm Antenna +/- .2 mm

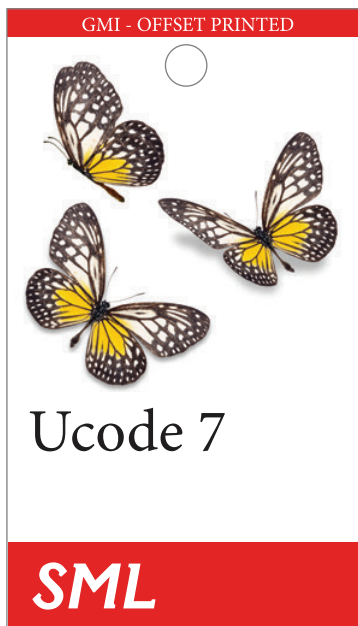
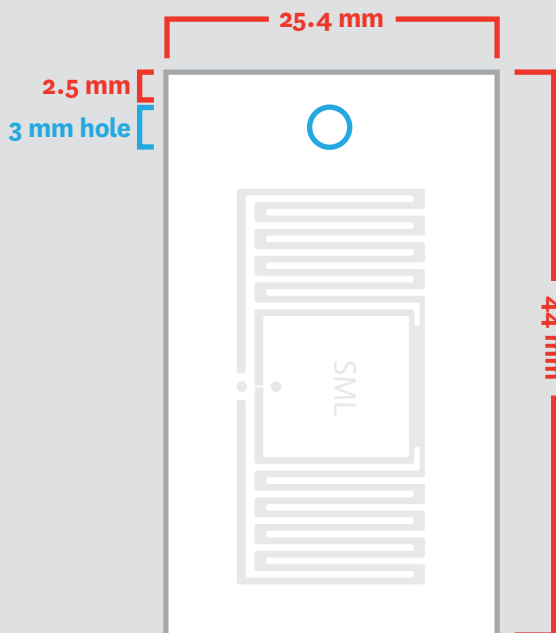
Integrated RFID Label

- ◆ RFID Inlay is integrated between two layers of laminated paper card
- ◆ CMYK + (varnish) front and back (no varnish in white box)
- ◆ Two paper sheets of 350 gsm C2S:
- ◆ The total thickness of integrated hang tag is approx. 750 gsm.

Cut Tag Finished Size:

44 mm x 25.4 mm

3 mm hole 2.5 mm from top of Hang tag



Front



Back

Available from any of SML's global Service Bureau's.

