

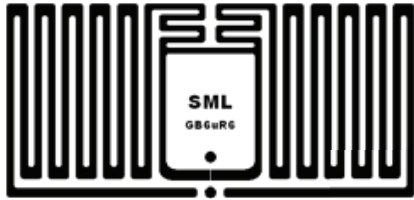
# SML GB6uR6 RFID Inlay

## SML RFID Product Spec Sheet

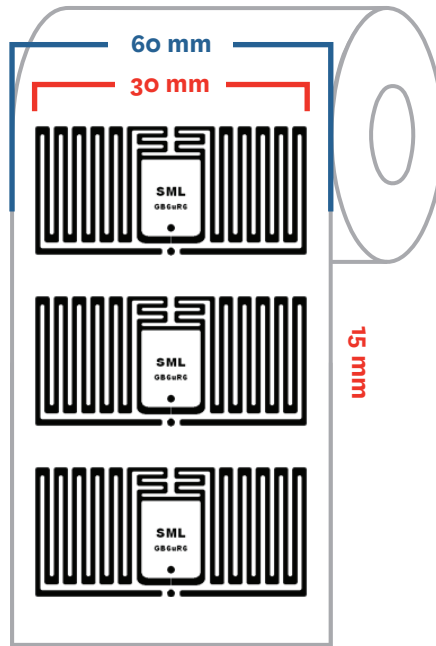
# SML

**Antenna Size:** 30 X 15 mm  
[1.18 X 0.59 in]

**Web width:** 60 mm [2.36 in]



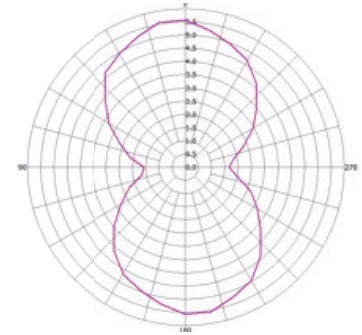
*Ideal for Small Item-Level*



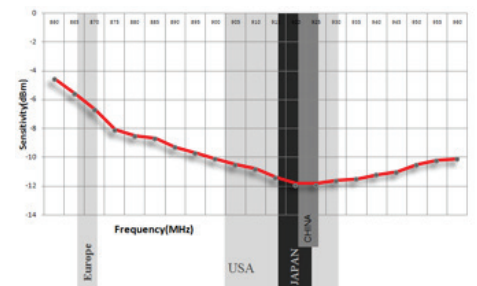
■ Web Width  
■ Antenna Size

## RF Sensitivity Performance:

Orientation Read Range (m)



Sensitivity Results from Free Space (dBm)



## Market Applications:

- ◆ Item/asset tracking, cosmetics, jewelry, pharmacy, anti-counterfeiting, hangtags

## Key Benefits:

- ◆ Small size fits various labels

Attributes	SML GB6uR6 RFID Inlay
Antenna Size	30 X 15 mm [1.18 X 0.59 in]
Web Width	60 mm [2.36 in]
Integrated Circuit (IC) Type	Impinj Monza R6
Operating Frequency	860 – 960MHz
RF Communications Protocol	EPC Global Class 1 Gen2 and ISO/IEC 18000-6C
Chip Memory	128/96 bits EPC
Inlay Substrate Material	PET
Features	AutoTune Technology
Read Sensitivity	-22.1 dBm
Write Sensitivity	-18.8 dBm
Operating Temperature	-5 °C to 60 °C / 23 °F to 140 °F
Operating Humidity	20% ~ 60% RH

For further inquiries, please contact SML RFID Team at:

[info@sml-rfid.com](mailto:info@sml-rfid.com)