

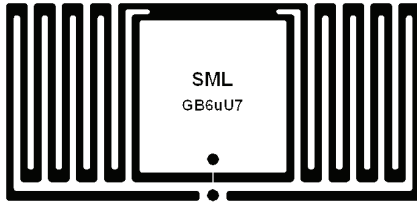
SML GB6uU7 RFID Inlay

SML RFID Product Spec Sheet

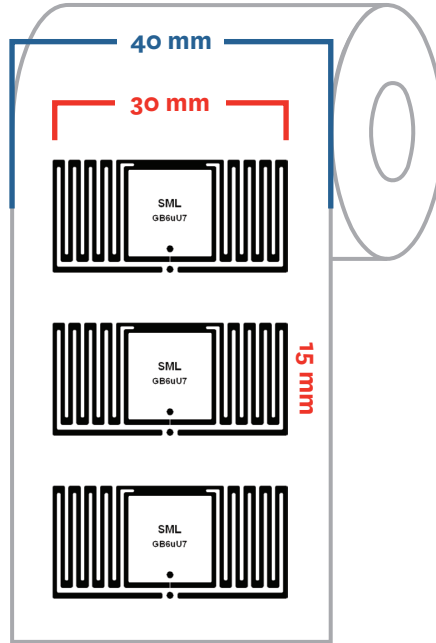
SML

Antenna Size: 30 X 15 mm
[1.18 X 0.59 in]

Web width: 40 mm [1.57 in]



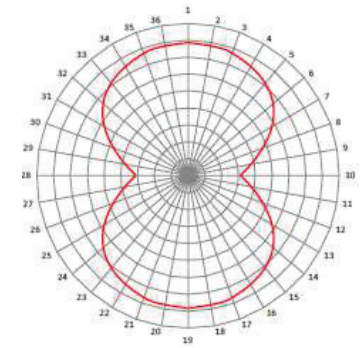
Ideal for Small Item-Level



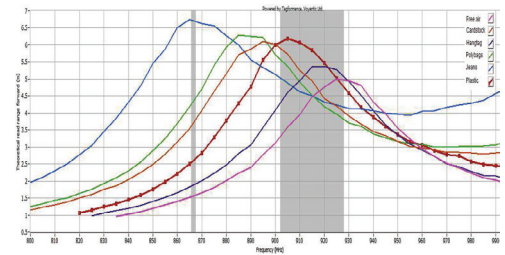
■ Web Width
■ Antenna Size

Reading Range (m):

Orientation Read Range



Reading Range on Different Materials



Market Applications:

- ◆ Small item-level tagging, jewelry, cosmetics

Key Benefits:

- ◆ Smaller size fits various labels
- ◆ Best-in-class performance
- ◆ Long read distances for small size inlay
- ◆ Fast inventory of dense RFID tag populations

Attributes	SML GB6uU7 RFID Inlay
Antenna Size	30 X 15 mm [1.18 X 0.59 in]
Web Width	40 mm [1.57 in]
Integrated Circuit (IC) Type	NXP UCODE 7
Operating Frequency	860 – 960MHz
RF Communications Protocol	EPC Global Class 1 Gen2 and ISO/IEC 18000-6C
Chip Memory	128 bits EPC
Inlay Substrate Material	PET
Features	Optimized for Accessory & Cosmetic Applications, Small Form Factor
Read Sensitivity	-21 dBm
Write Sensitivity	-16 dBm
Operating Temperature	-5 °C to 60 °C / 23 °F to 140 °F
Operating Humidity	20% ~ 60% RH

For further inquiries, please contact SML RFID Team at:

info@sml-rfid.com