

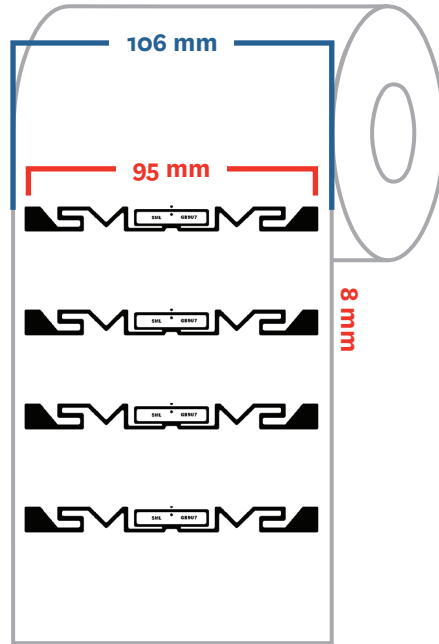
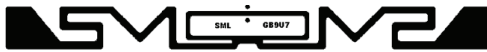
# SML GB9U7 RFID Inlay

## SML RFID Product Spec Sheet

**SML**

**Antenna Size:** 95 X 8 mm  
[3.74 X 0.31 in]

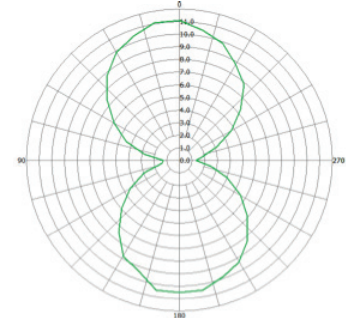
**Web width:** 106 mm [4.17 in]



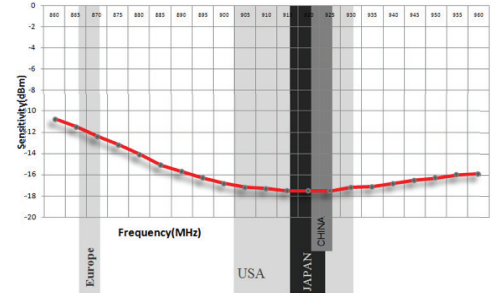
■ Web Width  
■ Antenna Size

## RF Sensitivity Performance:

Orientation Read Range (m)



Sensitivity Results from Free Space (dBm)



## Market Applications:

- ◆ General use, windshield, apparel and retail, long reading applications, high dielectric materials

## Key Benefits:

- ◆ Wide bandwidth with strong performance for high dielectric items

Attributes	SML GB9U7 RFID Inlay
Antenna Size	95 X 8 mm [3.74 X 0.31 in]
Web Width	106 mm [4.17 in]
Integrated Circuit (IC) Type	NXP UCODE 7
Operating Frequency	860 – 960MHz
RF Communications Protocol	EPC Global Class 1 Gen2 and ISO/IEC 18000-6C
ARC Approved Spec	Spec A, B, C, D, F, G, I, K, M, N, Q
Chip Memory	128 bits EPC
Inlay Substrate Material	PET
Features	Parallel Encoding, Privacy Control
Read Sensitivity	-21 dBm
Write Sensitivity	-16 dBm
Operating Temperature	-5 °C to 60 °C / 23 °F to 140 °F
Operating Humidity	20% ~ 60% RH

For further inquiries, please contact SML RFID Team at:

[info@sml-rfid.com](mailto:info@sml-rfid.com)