

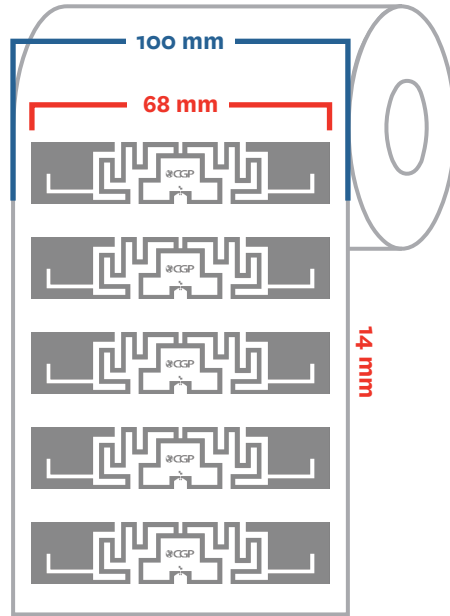
SML MAZE_M5 RFID Inlay

SML RFID Product Spec Sheet

SML

Antenna Size: 68 X 14 mm
[2.75 X 0.50 in]

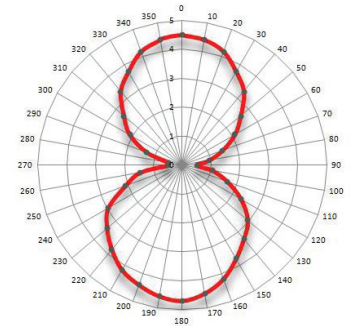
Web width: 100 mm [3.94 in]



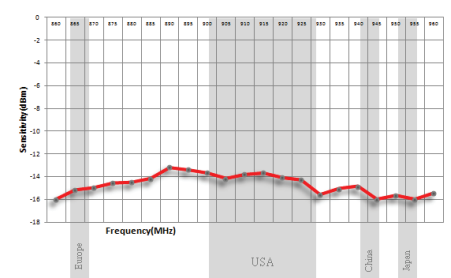
■ Web Width
■ Antenna Size

RF Sensitivity Performance:

Orientation Read Range (m)



Sensitivity Results from Free Space (dBm)



Market Applications:

- ◆ Item/asset tracking, retail, pallet, cases, baggage, apparel

Key Benefits:

- ◆ High read sensitivity, enabling long read ranges
- ◆ Fast encoding speed – over 3,000 tags/minute
- ◆ FastID and Tag Focus improves read rate and reliability

Attributes	SML MAZE_M5 RFID Inlay
Antenna Size	68 X 14 mm [2.75 X 0.50 in]
Web Width	100 mm [3.94 in]
Integrated Circuit (IC) Type	Impinj Monza 5
Operating Frequency	860 – 960MHz
RF Communications Protocol	EPC Global Class 1 Gen2 and ISO/IEC 18000-6C
ARC Approved Spec	Spec B, C, D, I, K
Chip Memory	128 bits EPC
Inlay Substrate Material	PET
Read Sensitivity	-21 dBm
Write Sensitivity	-16 dBm
Operating Temperature	-5 °C to 60 °C / 23 °F to 140 °F
Operating Humidity	20% ~ 60% RH

For further inquiries, please contact SML RFID Team at:

info@sml-rfid.com