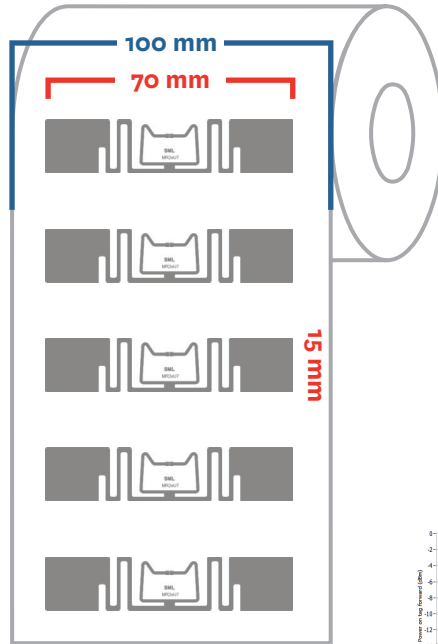
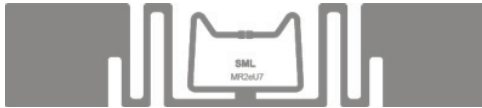


SML MR2eU7 RFID Inlay

SML RFID Product Spec Sheet

Antenna Size: 70 X 15 mm
[2.76 X 0.59 in]

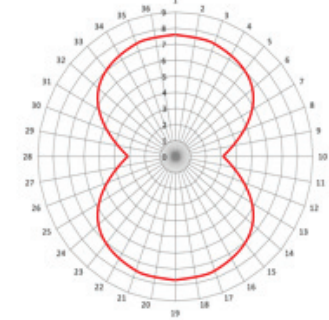
Web width: 100 mm [3.94 in]



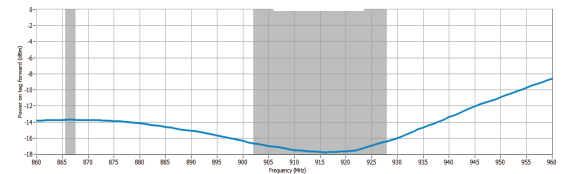
■ Web Width
■ Antenna Size

RF Sensitivity Performance:

Orientation Read Range (m)



Sensitivity Results from Free Space (dBm)



Market Applications:

- ◆ Item/asset tracking, including: pallet placards, cases, denim, polybags, apparel, and boxed items

Key Benefits:

- ◆ Enhanced antenna design with improved forward and reverse link performance. This results in a greater overall read range across wider angles of orientation and improved performance in dense tag populations.
- ◆ Specifically designed for apparel applications in order to maximize performance in portal and handheld reader based inventory applications.

Attributes	SML MR2eU7 RFID Inlay
Antenna Size	70 X 15 mm [2.76 X 0.59 in]
Web Width	100 mm [3.94 in]
Integrated Circuit (IC) Type	NXP UCODE 7
Operating Frequency	860 – 960MHz
RF Communications Protocol	EPC Global Class 1 Gen2 and ISO/IEC 18000-6C
Chip Memory	Up to 128 bits EPC
Inlay Substrate Material	PET
Features	Parallel Encoding, Self Serialization, 48-bit TID Serial, 32-bit UM (Optional)
Read Sensitivity	-21 dBm
Write Sensitivity	-16 dBm
Operating Temperature	-5 °C to 60 °C / 23 °F to 140 °F
Operating Humidity	20% ~ 60% RH

For further inquiries, please contact SML RFID Team at:

info@sml-rfid.com