

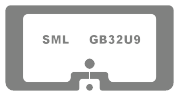
SML GB32U9 RFID Inlay

SML RFID Product Spec Sheet

SML

Antenna Size: 20 X 10 mm
[0.79 X 0.39 in]

Paperface - Wet: 26 X 12 mm
[1.02 X 0.47 in]



ARC APPROVED
(Auburn University)
DoseID Certified

Market Applications:

- ◆ Pharmaceutical/Medical Items/
Syringes/ Plastic Vials

Key Benefits:

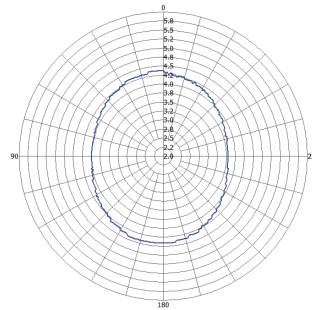
- ◆ Pre-Serialization of 96 bit EPC
- ◆ Robust Performance on Liquid
- ◆ Small Size for Easy Fit on Various Items

**For further inquiries, please
contact SML RFID Team at:**

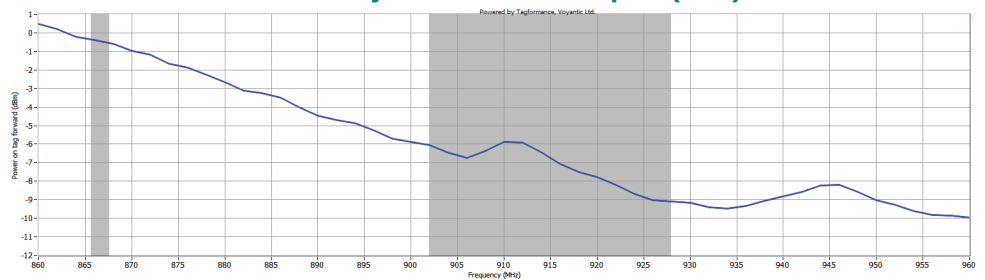
info@sml-rfid.com

RF Sensitivity Performance:

Orientation Read Range (m)



Sensitivity Results from Free Space (dBm)



Attributes	SML GB14WU9 RFID Inlay
Antenna Size	20 X 10 mm [0.79 X 0.39 in]
Paperface - Wet:	26 x 12 mm [1.02 x 0.47 in]
Integrated Circuit (IC) Type	NXP UCODE 9
Operating Frequency	860 – 960MHz
RF Communications Protocol	ISO/IEC 18000-63 and EPC Global Class 1 Gen2
ARC Approved Spec	S, DoseID Certified
Chip Memory	96 bits EPC
Inlay Substrate Material	PET
Features	Auto Adjust Technology, Brand Identifier, Pre-serialized 96bit EPC, Broad Bandwidth Antenna
Read Sensitivity	-24 dBm
Write Sensitivity	-22 dBm
Operating Temperature	-5 °C to 60 °C / 23 °F to 140 °F
Operating Humidity	20% ~ 60% RH