

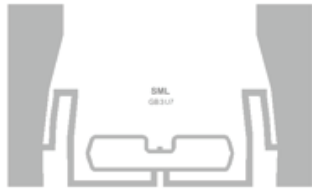
SML GB3U7 RFID Inlay

SML RFID Product Spec Sheet

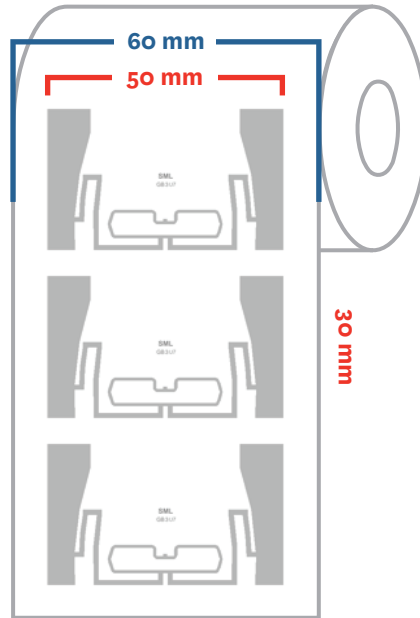
SML

Antenna Size: 50 X 30 mm
[1.97 X 1.28 in]

Web width: 60 mm [2.36 in]



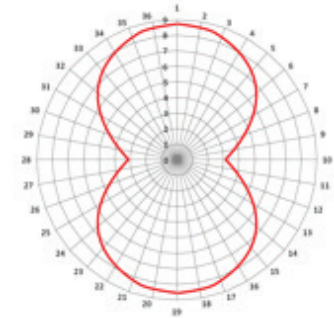
ARC APPROVED
(Auburn University)



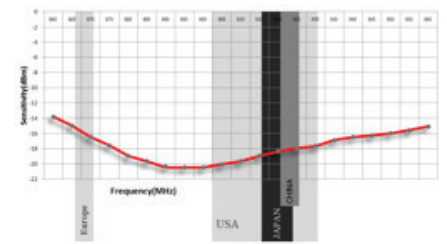
■ Web Width
■ Antenna Size

RF Sensitivity Performance:

Orientation Read Range (m)



Sensitivity Results from Free Space (dBm)



Market Applications:

- ◆ Item/asset tracking, including: denim, poly bags, apparel tags and boxed items

Key Benefits:

- ◆ Best-in-class performance
- ◆ Long read distances for small size inlay
- ◆ Fast inventory of dense RFID tag populations

Attributes	SML GB3U7 RFID Inlay
Antenna Size	50 X 30 mm [1.97 X 1.28 in]
Web Width	60 mm [2.36 in]
Integrated Circuit (IC) Type	NXP UCODE7
Operating Frequency	860 – 960MHz
RF Communications Protocol	EPC Global Class 1 Gen2 and ISO/IEC 18000-6C
ARC Approved Spec	Spec A, B, C, D, M, F, G, I, K, N, Q
Chip Memory	128 bits EPC
Inlay Substrate Material	PET
Features	Worldwide Frequency, Parallel Encoding, Privacy Control
Read Sensitivity	-20 dBm
Write Sensitivity	-16 dBm
Operating Temperature	-5 °C to 60 °C / 23 °F to 140 °F
Operating Humidity	20% ~ 60% RH

For further inquiries, please contact SML RFID Team at:

info@sml-rfid.com